

17484 Abbey Drive, Surrey

\$5,300,000



Abbey Ridge. Development potential. Current OCP calls for Suburban Residential. 2 to 4 Units Per Acre. Potential for higher density. Property has Mountain views with south north exposure. Home is a rancher with daylight walkout basement boasting almost 5000sf with renovated kitchen, lighting, new solid hardwood flooring. Huge main bedroom with a large ensuite, walk in closet and separate study room. Enough area for RV, Boat, Truck parking.

KEY INFORMATION

MLS® R2944182

Residential Detached

Fraser Heights

2 Bedrooms

3 Bathrooms

5,643 SF

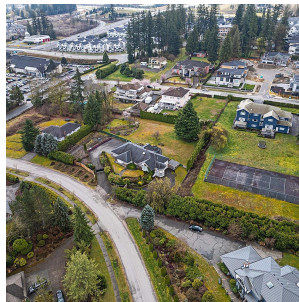
43,608 SF Lot

FEATURES

Year Built: 1989

Views: MOUNTAIN

Listed By: Macdonald Realty



rennie