

111 1135 Windsor Mews, Coquitlam

\$589,900



Fabulous GROUND floor CORNER unit at Bradley House in Polygon's master planned community of Windsor Gate. Newly painted, new flooring, this 682 SF 1 BED has a lovely patio for morning coffees or fresh air with your pet. Extra windows & 9'ceilings make this living & dining area a real GEM w/plenty of space for full sized furniture! Gourmet kitchen W/SS appliances, gas range & full height cabinetry. Residents enjoy Nakoma Club with TRUE RESORT style amenities inc outdoor pool & hot tub, entertainment lounge w/kitchen & BBQ, fitness studio w/classes, basketball, table tennis, theatre, guest suite & more. BONUS: 2 side by side parking & locker! Prime location & quick walk to Skytrain, Coquitlam Centre, parks & trails. Some photos virtually staged. SHOWINGS BY APPOINTMENT NOV 16 & 17, 2-4PM.

KEY INFORMATION

MLS® R2944229

Residential Attached

New Horizons

1 Bedroom

1 Bathroom

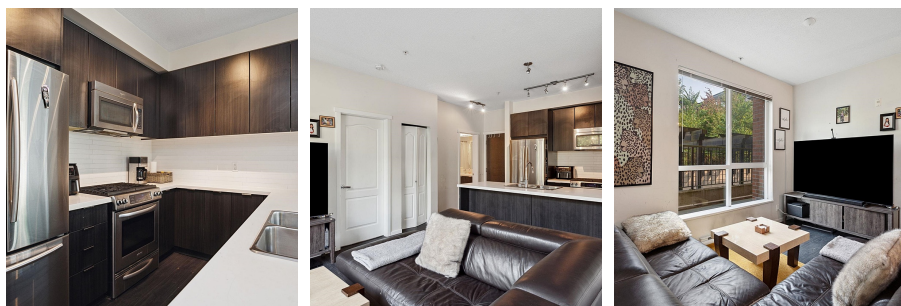
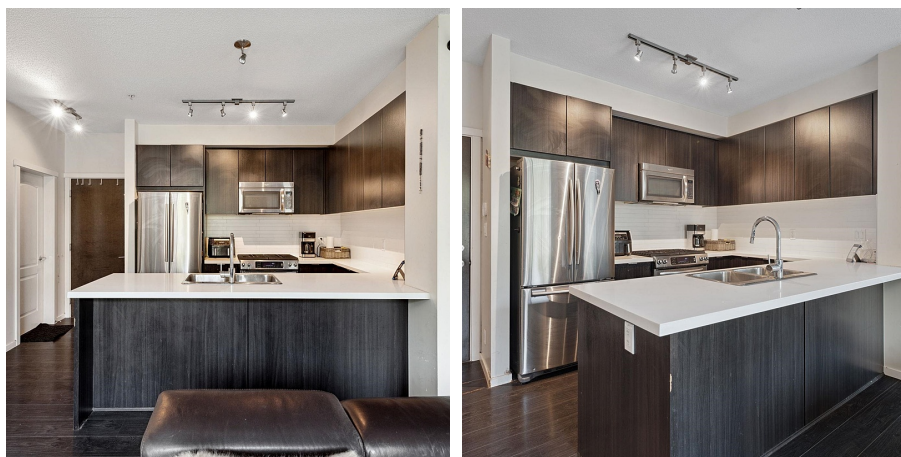
682 SF

\$305.03 Maintenance Fees

FEATURES

Year Built: 2015

Listed By: rennie & associates realty ltd.



Salina Kai PREC*
604.773.7013
skai@rennie.com
rennie.com/salinakai



Danny Chow PREC*
604.765.2469
dchow@rennie.com
rennie.com/dannychow

rennie