

409 14377 103 Avenue, Surrey

\$580,000



Top-Floor Penthouse Loft with Stunning Natural Light. Welcome to 409 14377 103 Avenue, Surrey, BC - a rare gem in Claridge Court! This penthouse loft offers an incredible blend of style, space, and convenience. The standout feature? Double-height ceilings with expensive windows that flood the space with natural light, creating a bright and airy atmosphere. Charming spiral staircase leads to a large loft, perfect for a rec room, home office, or game room. Situated in a prime location, you're just minutes away from Guildford Town Centre and have easy access to direct bus routes to the SkyTrain, making commuting a breeze. If you're looking for modern living with a touch of elegance in a vibrant neighbourhood, this is it!

KEY INFORMATION

MLS® R2944297

Residential Attached

Whalley

2 Bedrooms

2 Bathrooms

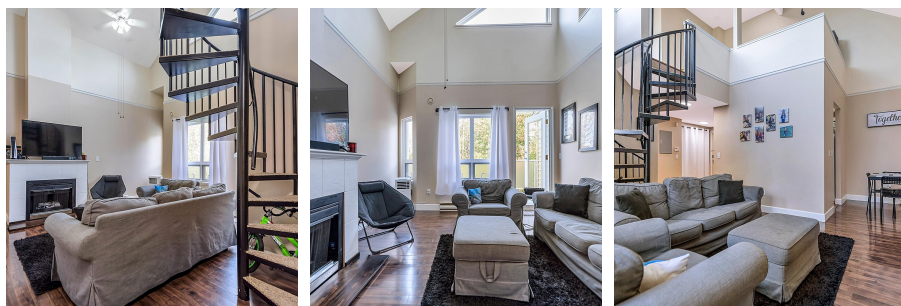
1,185 SF

\$493.07 Maintenance Fees

FEATURES

Year Built: 1996

Listed By: Royal LePage Little Oak Realty



rennie