

302 290 Francis Way, New Westminster

\$729,000



Large 996 sq. ft. sub penthouse corner unit boasts lots of sunlight with 9' ceilings. 2 bedrooms and a den which makes for a great little office. Large 13'x11' SE facing balcony ideal for entertaining and barbeques. Has a fabulous view of the mountains and Fraser river. Granite countertops, stainless steel appliances, wainscoting in living room, large walk-in closet, electric fireplace, chandeliers in bedroom all make for a luxury living lifestyle. 2 parking spots (tandem), storage locker, gym, club house, shopping, transit and parks nearby makes for a fantastic place to call home in a quiet neighborhood. We are listed under assessed value and this is a must see. OPEN HOUSE SATURDAY & SUNDAY 2:00-4:00pm

KEY INFORMATION

MLS® R2944383

Residential Attached

Fraserview

2 Bedrooms

2 Bathrooms

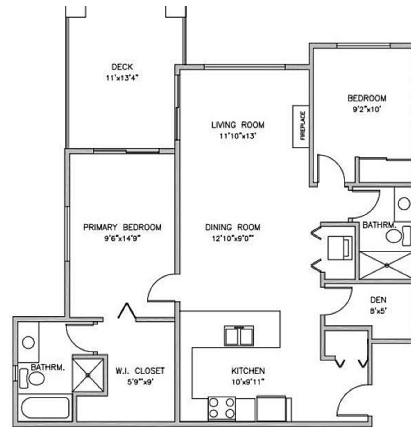
996 SF

\$646.83 Maintenance Fees

FEATURES

Year Built: 2008

Listed By: Zolo Realty



FLOOR PLAN



rennie