

# 38 3306 Princeton Avenue, Coquitlam

\$1,599,900



Incredibly RARE opportunity to own this stunning duplex-style townhome at Polygon's Hadleigh on the Park, in one of the best, most private locations in the complex - backing onto the creek and peaceful greenbelt. Bright and spacious floor plan, w/ 9' ceilings on the main, expansive windows and a balcony off the gourmet kitchen, featuring SS appliances and stone countertops. Upstairs offers 3 generous bedrooms, ALL w/ ensuites, plus laundry. The lower level includes a fourth bedroom w/ custom-built Murphy Bed, extra storage, full bath and a rec room, leading directly out to the backyard w/ turf, a spacious patio and fenced yard. Ample built-in storage throughout, plus side by side double garage w/ epoxy flooring. Prime location in Burke Mountain, directly across from Pioneer Park.

## KEY INFORMATION

MLS® R2944434

Residential Attached

Park Ridge Estates

4 Bedrooms

5 Bathrooms

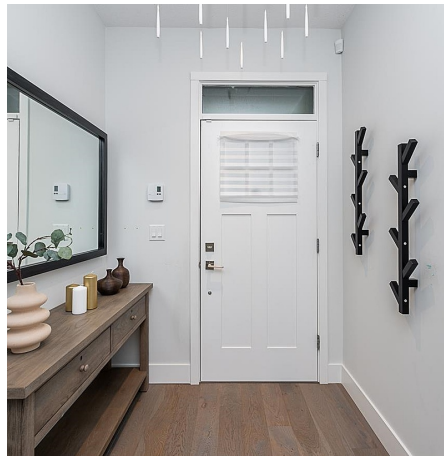
2,471 SF

## FEATURES

Year Built: 2020

Views: GREENBELT - BACK

Listed By: Royal LePage Sterling Realty



rennie