

506 3970 Carrigan Court, Burnaby

\$588,000



Discover The HARRINGTON – Your Perfect Home in the Heart of Lougheed Town Centre! This corner unit offers 2 bed/1.5 bath with North-West exposure. Excellent floor plan with separate bedrooms and baths, and a sunny balcony. A short walk to Lougheed Mall Skytrain station, bus loops, Shoppers, Save on Foods, Walmart, Tim Horton, daycare, schools. Easy access to SFU and HWY1. One parking and one generous size storage. A modernized, fully concrete building featuring EV car charging stations, fiber optic internet, a brand-new parking membrane, three updated elevators, a newer roof, upgraded plumbing, refreshed common areas and freshly landscaped garden. 2 cats are allowed, no dogs. Rentals allowed.

KEY INFORMATION

MLS® R2944553

Residential Attached

Government Road

2 Bedrooms

2 Bathrooms

884 SF

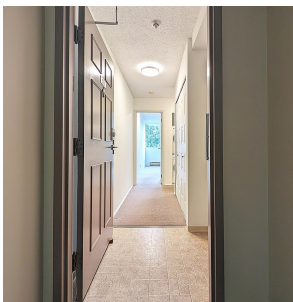
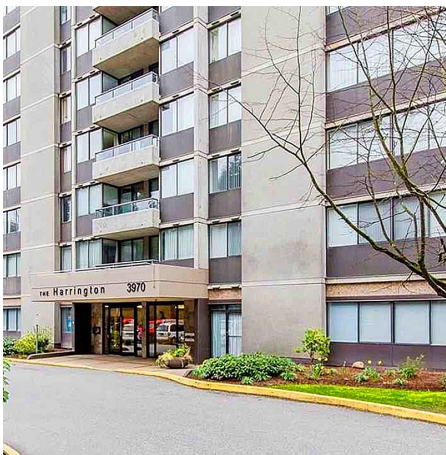
\$434.62 Maintenance Fees

FEATURES

Year Built: 1986

Views: Green Space With Trees

Listed By: Engel & Volkers Vancouver



rennie