

217 Battleford Ave, Saanich

\$874,900



Located in the desirable Saanich Gateway on a sizable 5,638 sqft lot, this home is vacant & turn-key. The upper level features a bright, airy two-bedroom, two-bathroom layout with a contemporary kitchen, large family living & dining area. The lower level currently has two bedrooms but could easily be converted into a three-bedroom suite with its own bathroom & kitchen, offering excellent opportunities for rental income or accommodating extended family living. From the main level, enjoy a sunny backyard and enjoy city views off the oversized deck. Positioned just steps away from the Uptown Shopping Centre and Tillicum Mall, residents benefit from easy access to essential amenities. The home's proximity to local schools, the Galloping Goose Trail, and an abundance of shopping, dining, and entertainment options further enhance its appeal. Strategically located near major transportation routes for easy access to downtown. This is a great option for a starter home or an investment. (id:56120)

KEY INFORMATION

MLS® 980675

Residential Detached

Tillicum

4 Bedrooms

3 Bathrooms

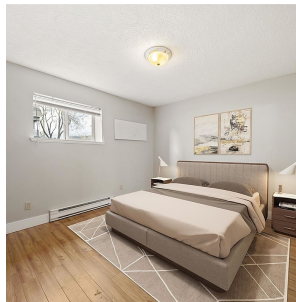
2,339 SF

5,638 SF Lot

FEATURES

Year Built: 1997

Listed By: Royal LePage Coast Capital - Chatterton



rennie