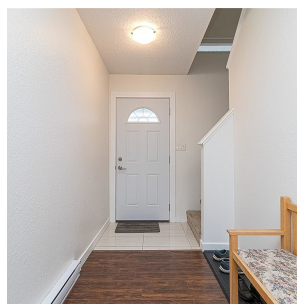
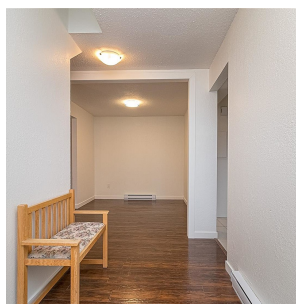


19 1506 Admirals Rd, View Royal

\$259,900



Here's affordable housing for you to share with people who don't have a large downpayment saved and live in fear of being evicted from their rental units. This type of leasehold housing may become more popular in the near future to make it possible for people to purchase. Investors may also be interested for positive cash flow. Family and Pet friendly, Pacific Village currently has just over 19 years left on it's head lease so that offers a purchaser that length of time to live worry free of being evicted. At this time, it's uncertain if the head lease will be renewed but there's a chance you're unit will be worth something. Compared to renting for the next 19 years this might be a great option for you or someone you know. Financing may be available through CIBC, the Royal or Credit Unions. The mortgage amortization can only be as long as the head lease. The landscaping and fence will be replaced soon now that the new lines have been run to the neighbouring building. This unit is on the Craigflower side of the complex so it's very near to public transit in all directions for your commuting convenience. It's within easy walking distance to Admirals Walk shopping centre, the Gorge walkway, restaurants, pubs, parks and recreation. It has updated thermal windows that serve to keep the unit warm in the winter, cool in the summer and very quiet inside. It's recently been painted with a neutral colour so you can personalize it to your tastes and truly make it 'HOME'. The heaters are all updated along with fairly new appliances. You'll notice that the flooring and cabinets have also been replaced in the recent past. Come see for yourselves or send your friends or family to check this 'often overlooked' opportunity. The unit comes with parking spot #42 and a second spot can usually be rented for \$50. Per month. There's lot of visitor parking. You can't turn left off of Admirals Rd. so you need approach from the opposite direction. (id:56120)

KEY INFORMATION

rennie