

# 15910 100a Avenue, Surrey

\$1,438,000



This charming three bedroom, two and half bathroom home is located on a quiet cul de sac in the Guildford area. The ideal location is close to schools, minutes from Hwy 1, Port Mann, and Guildford shopping and recreation. The home features include extensive upgrades: furnace, windows, roof, paint, crown moldings, kitchen with quartz counters, KitchenAid S/S appliances, and heated tile floors in the main bath. It boasts a spacious open floor plan, large covered cedar deck, open deck, and views of nature and a green backyard. Has access for RV/boat parking, workshop with mezzanine storage, and potential to add a bedroom on main level.

## KEY INFORMATION

MLS® R2944700

Residential Detached

Guildford

3 Bedrooms

3 Bathrooms

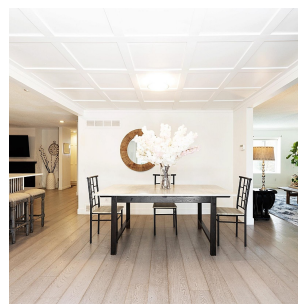
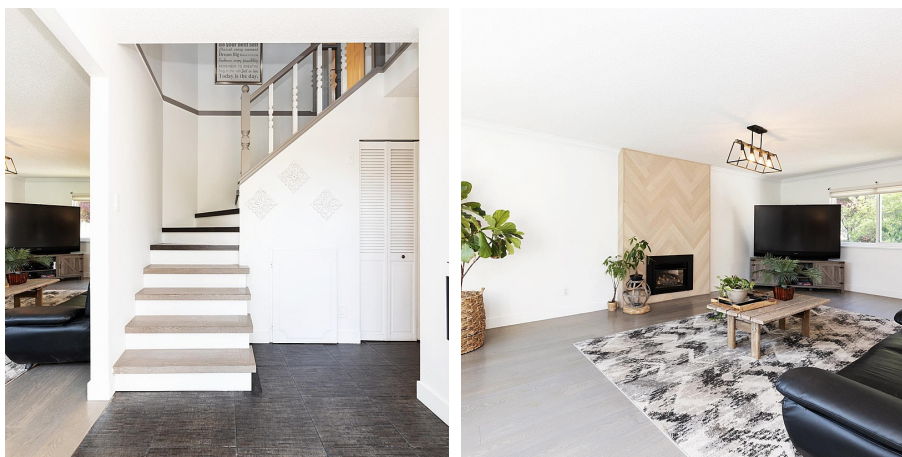
2,295 SF

7,226 SF Lot

## FEATURES

Year Built: 1981

Listed By: Stonehaus Realty Corp.



rennie