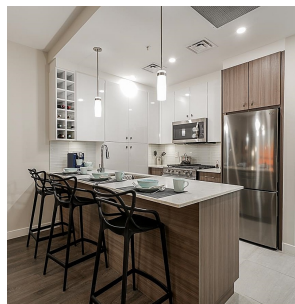


# 416 23200 Gilley Road, Richmond

\$609,900



Hamilton Village West. 5-5-5: Limited time promotion - 5k in savings, 5% deposit, move in 5 months! This 1 bedroom and den penthouse unit enjoys a West-facing patio, perfect for hosting guests. Inside, elegance meets comfort with stainless steel appliances and sleek modern interiors. All units include forced air heating and cooling, EV ready parking and 1 EV charger. The East and West, mixed-use buildings, share two indoor amenity spaces, beautiful gardens, a huge playground, an underground parkade and a gym. Steps away from over 20 retail offerings & services. 8 homes remain! Estimated completion March-June 2025. Display suite is located across the street at 105 -23233 Gilley Road and is a 1 Bed & Den unit. OPEN Saturdays and Sundays from 2-4 PM. \*Note photos are of a 2 bed showroom

## KEY INFORMATION

MLS® R2944734

Residential Attached

Hamilton

1 Bedroom

1 Bathroom

646 SF

\$366.49 Maintenance Fees

## FEATURES

Year Built: 2025

Listed By: RE/MAX Westcoast

rennie