

2670 Fortress Drive, Port Coquitlam

\$1,715,000



Discover the Peacefull living of 2670 Fortress Dr, an immaculate home nestled in tranquil Citadel. This 3 Bed 2.5 Bath has been lovingly maintained and cared for; from the serene backyard oasis perfect for relaxation and entertainment amidst lush greenery, to the UPDATED kitchen w/ Quartz Counters & SS Appliances. HUGE Primary Bedroom on the Main w/ LARGE ensuite, a spacious family room looking out to the zen inspiring backyard, this lovely home is perfect for your family. The community's friendly atmosphere and proximity to local amenities enhance the appeal of this beautiful location. Close to Fortress Park, Castle Park, dog parks and all lvls of SCHOOLS; it's ideal for the WHOLE family.

KEY INFORMATION

MLS® R2944828

Residential Detached

Citadel

3 Bedrooms

3 Bathrooms

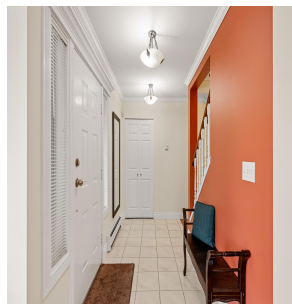
2,130 SF

6,881 SF Lot

FEATURES

Year Built: 1992

Listed By: eXp Realty of Canada, Inc.



rennie