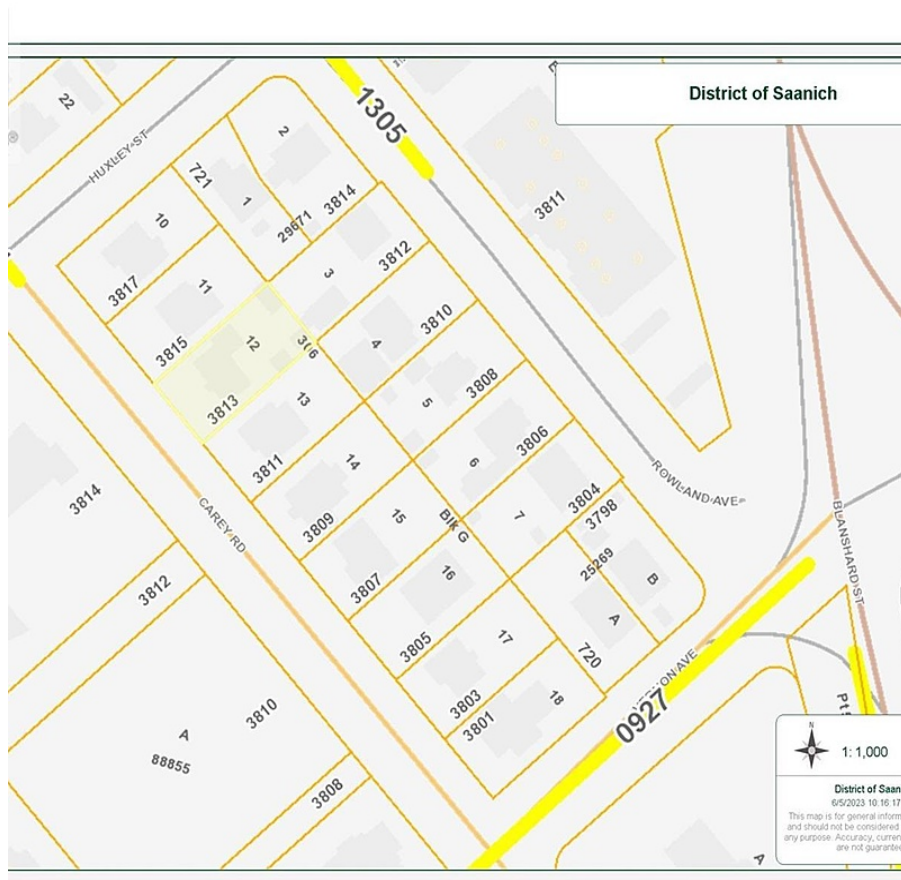


3813 Carey Rd, Saanich

\$2,150,000



****Developer/Investor Alert!**** Seize this rare and highly anticipated opportunity to invest in one of the first assembled mid-rise development sites under the UpTown/Douglas land-use policy. This prime site is perfectly positioned for a 4-6 storey mid-rise condo building or even an 8-storey development with commercial potential on the Carey Road side. Situated in a highly coveted location, the property offers unparalleled access to hundreds of amenities, including Uptown Shopping Center, Whole Foods, popular restaurants, and convenient public transit. This offering is sold in conjunction with the adjoining property at 3815 Carey Rd. , making it a comprehensive investment for visionary developers. Don't miss your chance to capitalize on this exceptional opportunity! (id:56120)

KEY INFORMATION

MLS® 980709

Residential Detached

Gateway

0 Bedrooms

1 Bathroom

2,008 SF

7,200 SF Lot

FEATURES

Year Built: 1940

Listed By: eXp Realty