

308 4809 Spearhead Drive, Whistler

\$995,000



Located on the quiet Sproatt Mountain view side, this bright 1-bedroom unit features open plan living with a gas fireplace, oversized windows with stunning mountain/forest views, and a small balcony with breathtaking 180-degree vistas. World-class ski-in/ski-out access is right across from Blackcomb Mountain, just steps from the Upper & Whistler Villages, offering access to shops, restaurants, gondolas, skiing/hiking/biking/golf/lakes & more. Phase 1 zoning allows unlimited owner use and nightly rentals/Airbnb with no foreign buyer restrictions. Ideal for a weekend getaway, a revenue-generating investment property, or fulltime living. Marquise is a concrete building offering excellent amenities, including a heated pool, hot tub, sauna, gym, ski/bike storage, and UG parking. Turnkey ready!

KEY INFORMATION

MLS® R2945179

Residential Attached

Benchlands

1 Bedroom

1 Bathroom

574 SF

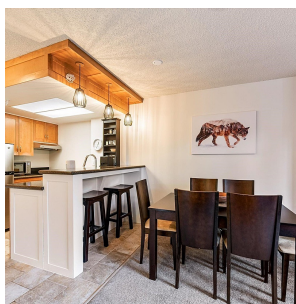
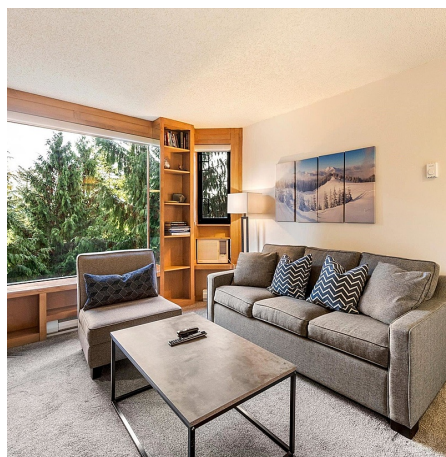
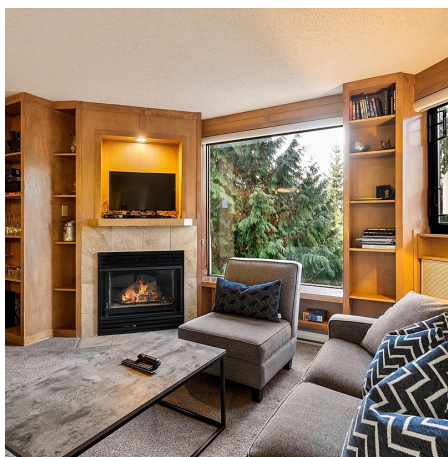
\$446.15 Maintenance Fees

FEATURES

Year Built: 1990

Views: Mountain Views

Listed By: Whistler Real Estate Company Limited



rennie