

# 41740 Honey Lane, Squamish

\$1,550,000



Beautiful and spacious 1/2 duplex in the desirable Honey Lane cul de sac in Brackendale. With No Strata fees - enjoy this well designed family home with high ceilings, an updated gourmet kitchen with new appliances. A/C upgrades and heated floors. The open layout of the kitchen, dining and family room creates a nice flow and leads out to the large back deck that is perfect for entertaining. The rooms are flooded with natural light with oversized windows and stunning mountain views. Plus a large studio income suite on the ground floor with a separate entrance as a mortgage helper. Take advantage of the double garage with extra storage spaces and the extra long driveway for your vehicles. This home is move in ready and checks all of the boxes. OPEN HOUSE SATURDAY NOV. 23rd 2-5PM

## KEY INFORMATION

MLS® R2945233

Residential Attached

Brackendale

4 Bedrooms

4 Bathrooms

2,575 SF

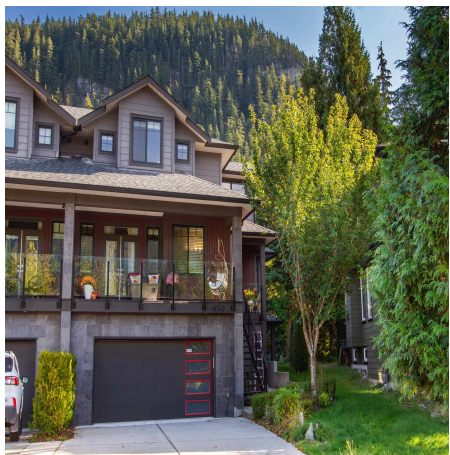
13,000 SF Lot

## FEATURES

Year Built: 2014

Views: West Coast Mountains

Listed By: Macdonald Realty



rennie