

# 38 11100 Railway Avenue, Richmond

\$1,568,000



Great curb appeal on this super spacious 1,966 sq. ft. duplex-style townhome in the gated community of "Westwind Terrace" just minutes from historic Village of Steveston. This move-in ready 2 bed+ home boasts recent modern updates to kitchens, bathrooms, flooring, closets/storage, high-efficiency furnace, 60gal HWT, & more. Lots of natural light throughout, with open living/dining area with vaulted ceilings, kitchen with eating area, and large flex room ready for your ideas. Amazing Primary suite features a flexible baby/den area, 5 pc spa-like ensuite and walk-in closet. Fully fenced yard is perfect for summer BBQ's complete with low maintenance artificial turf and pavers. Steps to the Railway Green Path connecting you to all the areas popular walking/biking trails, parks, shops and more!

## KEY INFORMATION

MLS® R2945316

Residential Attached

Westwind

2 Bedrooms

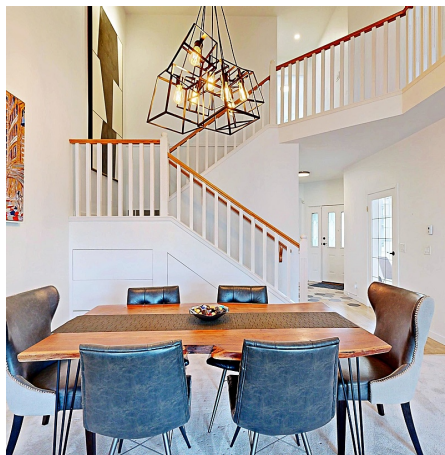
3 Bathrooms

1,966 SF

## FEATURES

Year Built: 1988

Listed By: Macdonald Realty



rennie