

# 1502 68 Smithe Street, Vancouver

\$648,000



INVESTOR'S DREAM! Stunning 1-Bedroom + Den at the Iconic & Luxurious One Pacific. The Den is large enough to fit a twin-sized bed. This bright and functional floorplan features a modern kitchen with quartz countertops, high end stainless steel appliances, and a spa-like bathroom. Enjoy views of False Creek from your private balcony and exclusive access to luxury amenities: huge party room with a chef's kitchen, the iconic infinity swimming pool, sauna, steam room, and hot tub. You'll also enjoy access to additional amenities at the sister building, The Arc. Steps to Yaletown, the seawall, dining, shopping, and entertainment. All this for Under \$650K! Storage locker included! Parking rentals available. **DON'T MISS THIS OPPORTUNITY!** Book a showing today!

## KEY INFORMATION

MLS® R2945833

Residential Attached

Downtown

1 Bedroom

1 Bathroom

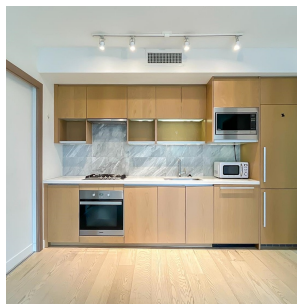
502 SF

\$369.87 Maintenance Fees

## FEATURES

Year Built: 2016

Listed By: rennie & associates realty ltd.



**Petra Misianova**  
604.440.7650  
pmisianova@rennie.com  
rennie.com/petramisianova



**Carrie Tsang** PREC\*  
778.865.5622  
ctsang@rennie.com  
rennie.com/carrietsang



**Bien**  
604.603.2  
bmatute@rennie.com

**rennie**