

# 310 6077 London Road, Richmond

\$838,800



This Penthouse boasts a rooftop deck (29' x 19') with breathtaking 180° unobstructed views of the marina, mountains, and river! Spacious 2 bedrooms + 2 full bathrooms, an open-concept kitchen, 9' high ceilings, Geothermal heating & A/C. 2 parking spots + storage locker. Walking distance to Steveston Village, waterfront dyke, Diplomat Bakery, Ember restaurant, shopping, etc. School Catchment: Homma Elementary and McMath Secondary. Open House: Sat Jan 18, 2pm-4pm & Sun Jan 19, 2pm-5pm

## KEY INFORMATION

MLS® R2946213

Residential Attached

Steveston South

2 Bedrooms

2 Bathrooms

1,228 SF

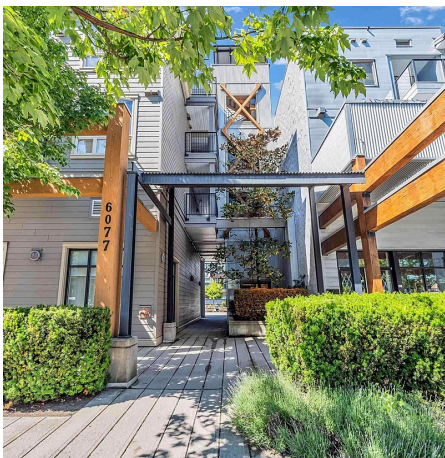
\$831.00 Maintenance Fees

## FEATURES

Year Built: 2009

Views: MARINA, MOUNTAIN, RIVER

Listed By: RE/MAX Westcoast



rennie