

7370 Pandora Street, Burnaby

\$3,180,000



Beautiful Burrard Inlet & Mountain/City View at Capital Hill neighbour! This gorgeous home sits on almost 10,000sqft lot, huge & flat backyard space, indoor size about 5000sqft 3 level finishing with great layout! Very well maintained, huge interior space, lots of characters, separate access for basement mortgage helper units. Close to SFU, parks, shopping, public transit etc. Motivates Seller & welcome to book showings! Open house: Jan 18 Sat 2-4.

KEY INFORMATION

MLS® R2946099

Residential Detached

Westridge

10 Bedrooms

6 Bathrooms

4,703 SF

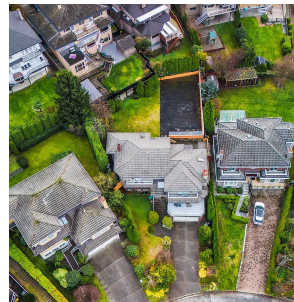
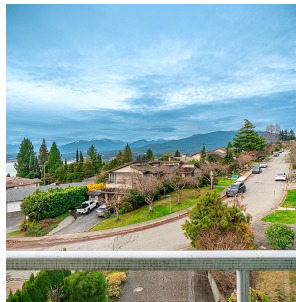
9,296 SF Lot

FEATURES

Year Built: 1988

Views: Mountain & City & Water

Listed By: RE/MAX Crest Realty



rennie