

# 307 7865 Patterson Rd, Central Saanich

\$585,000



Stunning top-floor 2 bed, 2 bath condo in a prime location just steps to the Saanichton village. This move in ready unit has gorgeous updated flooring in the open main living space along with a cozy gas fireplace. The bedrooms are generously sized, and include a very large primary suite with walk-in closet and ensuite with a stand up shower. Conveniences include an in suite storage room with laundry and room for a deep freeze, stainless kitchen appliances, covered parking and secure separate storage. The location is second to none with all level of shops and restaurants, professional and medical services and beautiful parks an easy walk through a very safe neighbourhood. This is the first listing in this desirable building in over 1.5 years. Don't wait, make an appointment to see it today! (id:56120)

## KEY INFORMATION

MLS® 981173

Residential Attached

Saanichton

2 Bedrooms

2 Bathrooms

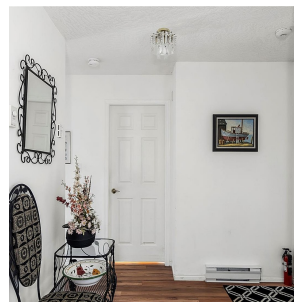
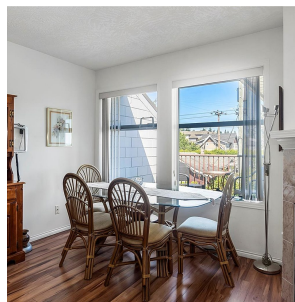
1,162 SF

1,162 SF Lot

## FEATURES

Year Built: 1995

Listed By: Alexandrite Real Estate Ltd.



rennie