

2506 280 Ross Drive, New Westminster

\$738,000



Beautifully updated view unit at The Carlyle in Victoria Hill! This 2 Bed, 2 Bath, and 2 large covered balconies! Recent updates incl: new kitchen & bath cabinets, laminate floors, and interior paint (2024). Great layout offers large separated bedrooms, floor to ceiling windows, high 9'9 ceilings, unobstructed NW panoramic Mountain views & overlooking Queens Park! Kitchen is spacious with lots of counter space & stainless steel appliances, and modern cabinets. Amenities: lounge w/ full kitchen, games & media room, guest suites, gym, caretaker, gardens. Great location in the Victoria Hill community close to restaurants, shopping, transit, schools and Queens Park is just steps away. Call to schedule your private viewing today!

KEY INFORMATION

MLS® R2946427

Residential Attached

Fraserview

2 Bedrooms

2 Bathrooms

941 SF

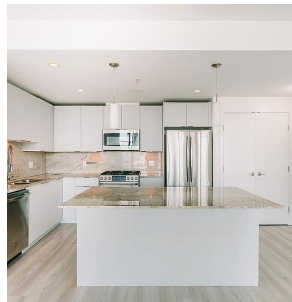
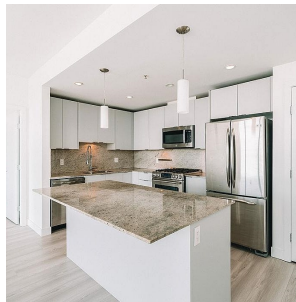
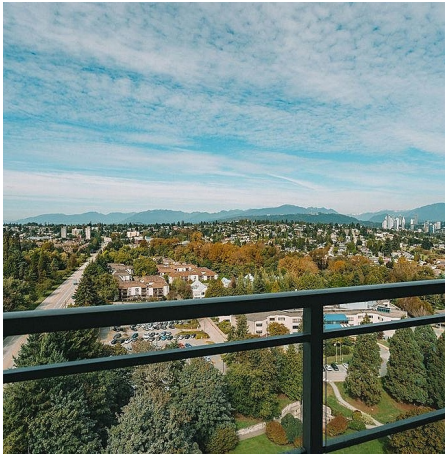
\$497.51 Maintenance Fees

FEATURES

Year Built: 2010

Views: City and Mountain

Listed By: Oakwyn Realty Ltd.



rennie