

306 1201 Hillside Ave, Victoria

\$530,000



This beautifully updated condo offers the perfect blend of comfort and convenience, centrally located to everything you need! With an open, airy layout and plenty of natural light, this home is designed for easy living. The freshly painted interior and beautiful laminate flooring create a fresh, welcoming feel throughout. The updated bathroom features a sleek new tub, adding a touch of luxury to your daily routine. Enjoy the spaciousness of this well-maintained unit, with access to nearby shopping, dining, and all the amenities you could want. Plus, with downtown just a 30-minute walk away, you'll have the best of both worlds – a comfortable home with the vibrant city life only moments away. This home boasts its own underground secured parking stall and private storage. Perfect for first-time buyers, investors, or anyone seeking a low-maintenance lifestyle in a fantastic location, this condo is ready to move in and make it your own. Don't miss out – schedule your showing today! (id:56120)

KEY INFORMATION

MLS® 981131

Residential Attached

Hillside

2 Bedrooms

2 Bathrooms

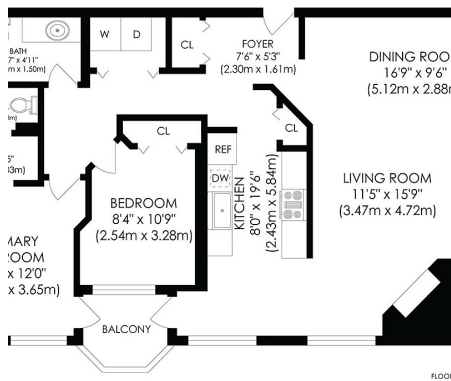
1,082 SF

1,043 SF Lot

FEATURES

Year Built: 1991

Listed By: Royal LePage Coast Capital - Chatterton



APPROXIMATE SQUARE FOOTAGE
ALL DRAWINGS ARE FOR ILLUSTRATIVE PURPOSES ONLY

AVENUE, UNIT 306, VICTORIA, BC

