

# 149 1331 Olmsted Street, Coquitlam

\$1,298,000



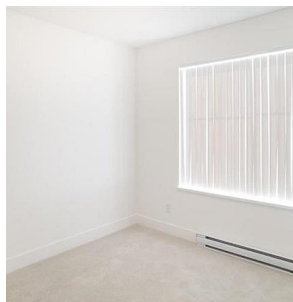
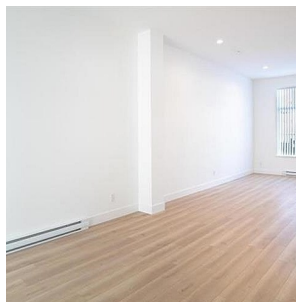
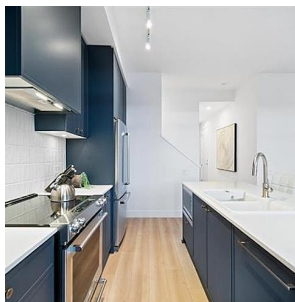
Riley Park on Burke Mountain by Mosaic. 4 bedroom corner unit with 2 . 5 bathroom facing South with city view. This AI-Plan Dakota Series home has 1,511 square feet of living space. Top floor has 3 bedrooms with 2 full bathroom. Main floor is an open living and dining area that opens to the kitchen and powder room that walks onto a private patio. Down on the lower floor, there is the 4th bedroom with 2 parking Garage and lots of storage space. With a new interior design look and feel, this Dakota home was design' to use every inch.open house 2-4 pm Sat Jan 18 and Sunday Jan 19

## KEY INFORMATION

MLS® R2947066  
Residential Attached  
Burke Mountain  
4 Bedrooms  
3 Bathrooms  
1,511 SF

## FEATURES

Year Built: 2023  
Views: GREENBELT  
Listed By: Royal LePage Sterling Realty



rennie