

# 806 298 E 11 Avenue, Vancouver

\$949,000



AMAZING NEW PRICE! Experience luxury living in the heart of Mt Pleasant with this stunning PENTHOUSE unit. Welcome home to Sophia, this renovated 2 bed, 2 bath + den features an impressive 835 sq ft of interior space complemented by a private 114 sq ft balcony. Enjoy 10 ft ceilings, open-concept layout + floor-to-ceiling windows that flood the home with natural light & offer breathtaking city/mountain views. The chef's kitchen is equipped with a gas stove, stainless steel appliances, granite countertops, and quality laminate floors. The primary bedroom comfortably fits a king-sized bed + walkthrough closet w/ new carpets. With a Walk Score of 96, this home is steps away from the trendiest restaurants & shops making it the perfect urban oasis. Includes 1 parking & 1 storage.

## KEY INFORMATION

MLS® R2947119

Residential Attached

Mount Pleasant

2 Bedrooms

2 Bathrooms

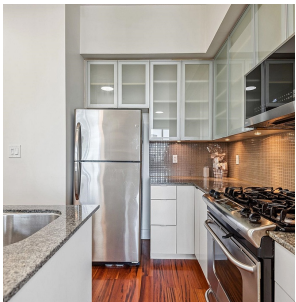
835 SF

\$454.84 Maintenance Fees

## FEATURES

Year Built: 2008

Listed By: Royal LePage West Real Estate Services



rennie