

65 18983 72a Avenue, Surrey

\$799,999



Welcome to Kew by MOSAIC in Cloverdale! an exceptional end-unit townhouse offering modern living in a highly desirable location. Features: 2 Bedrooms + Den + 2.5 Bathrooms, 2 Parking Spaces (1 in garage, 1 in carport), Open-concept main floor with 9' ceilings, providing a bright and spacious atmosphere, A versatile Den on the ground floor, ideal for a home office, guest room, or additional storage. Located in a quiet, family-friendly neighborhood with convenient access to schools, shopping, parks, and transit options. Nearby Schools: Clayton Elementary, Salish Secondary. Perfectly suited for professionals, small families, or those seeking a peaceful yet well-connected lifestyle, this home offers the ideal balance of comfort, functionality, and convenience. Schedule a private viewing today!

KEY INFORMATION

MLS® R2947149

Residential Attached

Clayton

2 Bedrooms

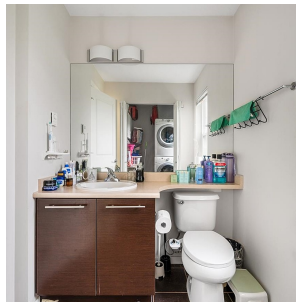
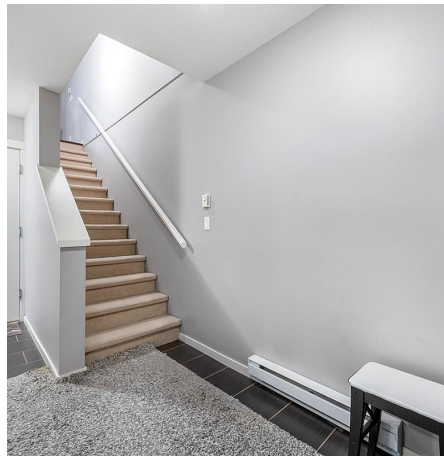
3 Bathrooms

1,372 SF

FEATURES

Year Built: 2007

Listed By: Oakwyn Realty Ltd.



rennie