

# 2418 Victoria Drive, Vancouver

\$1,499,999



Introducing V8 townhomes in the heart of Grandview Woodland neighbourhood located on the corner of East 8th Avenue and Victoria Drive. This brand new 3 bed 4 bath townhome features gourmet kitchen with built in Fisher and Paykel appliances, white oak engineered hardwood flooring, Riobel and Kohler Plumbing fixtures, and a roof top deck. V8 is a design driven development and is offering an unparalleled value. Walking Distance to the skytrain, commercial drive, bus stops, restaurants and grocery stores.

## KEY INFORMATION

MLS® R2947213

Residential Attached

Grandview Woodland

3 Bedrooms

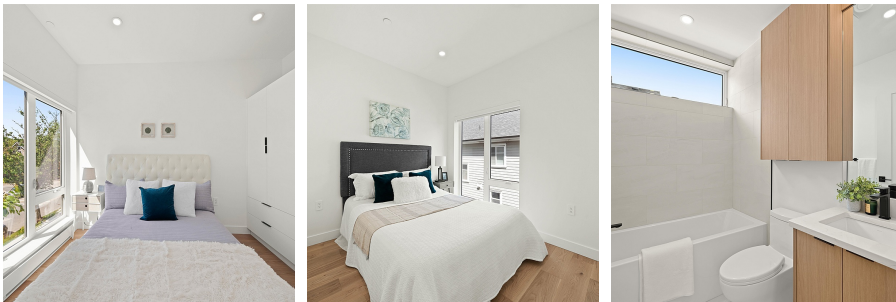
3 Bathrooms

1,216 SF

## FEATURES

Year Built: 2024

Listed By: Oakwyn Realty Ltd.



rennie