

12 50 Panorama Place, Port Moody

\$1,098,000



Pristine 3-bed, 3-bath 2 level townhome at Adventure Ridge in Port Moody's Heritage Woods. Built by multi Georigie award winning ParkLane Homes, this 1,384 SF Adventure floorplan is partially an end unit townhouse as your neighbour is below you. Enjoy a spacious, elevated, private outdoor space facing SW to a lush greenbelt. It's live art! Upon entry you have 15 ft. foyer ceilings & 9 ft. ceilings on the main. Upgrades include: Brand new HW Tank, wide plank 7"x 48" vinyl flooring, modernized fireplace fascia, freshly painted in 2021 & lots more. Very Family Friendly! A stone's throw from Aspenwood Elementary/ Heritage Mountain Community Centre. Single garage & reserved parking spot too. Quick drive to Brewery Row.

KEY INFORMATION

MLS® R2947320

Residential Attached

Heritage Woods

3 Bedrooms

3 Bathrooms

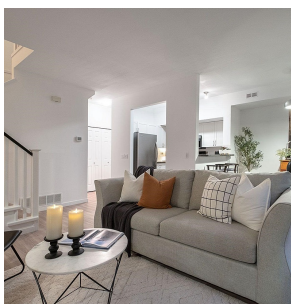
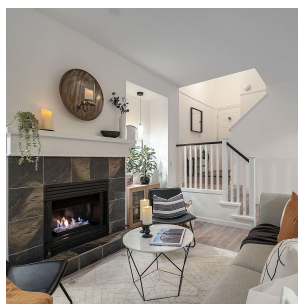
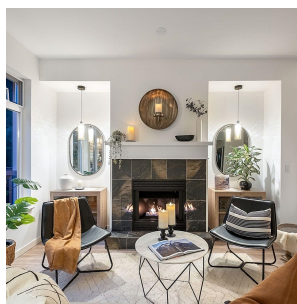
1,384 SF

FEATURES

Year Built: 2002

Views: PRIVATE GREENBELT

Listed By: Royal LePage Sterling Realty



rennie