

51 10480 248 Street, Maple Ridge

\$1,089,999



Discover the ultimate in luxury and comfort with this exquisite 2,954 sq. ft. townhouse in Maple Ridge! Featuring 4 bedrooms, 4 bathrooms, and 4 fireplaces, this home is designed for both elegance and practicality. The gourmet kitchen includes a walk-in pantry, while high-end finishings and thoughtful details shine throughout. The breathtaking mountain views from the master bedroom. Enjoy the tranquility of a private yard backing onto a green belt, perfect for relaxing or entertaining. Schools nearby, this property is ideal for families. The basement has a separate entry, suitable for a nanny suite. Additional perks include air conditioning, abundant storage and closet space, a double garage, and the peace of mind of a 5-10 year warranty. Your dream home awaits!

KEY INFORMATION

MLS® R2946210

Residential Attached

Thornhill

4 Bedrooms

4 Bathrooms

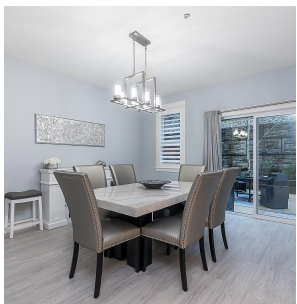
2,954 SF

FEATURES

Year Built: 2020

Views: MOUNTAINS

Listed By: RE/MAX Blueprint



rennie