

209 322 E 15th Avenue, Vancouver

\$1,489,900



E15 JUST OFF MAIN by OpenForm. Winner of the UDI Award for Excellence in Ground Orientated Housing 2024. This modern 3-bed, 2.5-bath home, designed by MA+HG Architects, spans two levels and features a private roof deck. Interiors by Cristina Oberti are complemented by large windows that flood the space with natural light. A secure entry opens from the tranquil inner courtyard. The kitchen offers ample storage, a gas cooktop, and appliances by Fisher & Paykel. The exterior features art by Scott Sueme, capturing the vibrant spirit of Mount Pleasant. Just steps from Main Street and minutes from downtown, E15 blends modern design with a creative edge. Built by Urban One and landscaped by Considered Design. Includes parking, storage, and a bike locker. Enjoy GST savings for a limited time!

KEY INFORMATION

MLS® R2947490

Residential Attached

Mount Pleasant

3 Bedrooms

3 Bathrooms

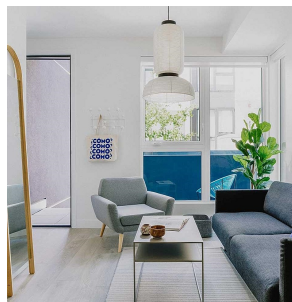
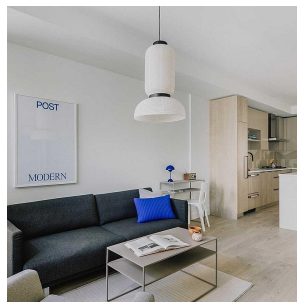
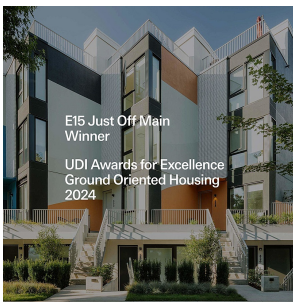
1,155 SF

FEATURES

Year Built: 2024

Views: Private Roofdeck

Listed By: rennie & associates realty ltd.



Christopher Boyd PREC*
604.351.0533
cboyd@rennie.com
rennie.com/christopherboyd



Patrick Campbell
pcampbell@rennie.com
rennie.com/patrickcampbell

rennie