

# 1067 Prairie Avenue, Port Coquitlam

\$1,299,800



Unlock the potential of this 8,625 sq ft property with a rare 71-foot frontage, offering exceptional value in the land. Ready to be redeveloped, the lot features a new front curb, sidewalk, and a fully paved lane out back. Ideal for a custom build or future development, this property provides endless opportunities. The existing 1939 bungalow includes 1,778 sq ft of living space and is situated in a prime location near top schools, transit, parks, shopping, and the Poco Trail. Don't miss this chance to invest in a premium lot with unlimited potential!

## KEY INFORMATION

MLS® R2947668

Residential Detached

Lincoln Park

3 Bedrooms

2 Bathrooms

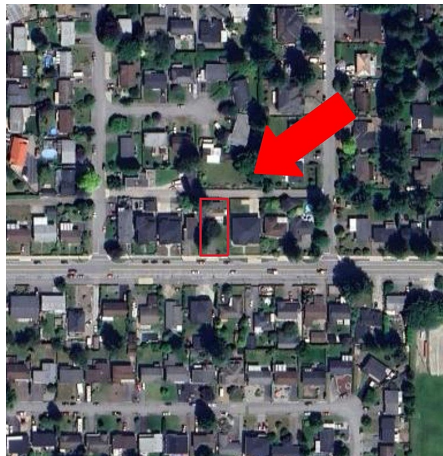
1,778 SF

8,625 SF Lot

## FEATURES

Year Built: 1939

Listed By: RE/MAX Sabre Realty Group



rennie