

32105 Elkford Drive, Abbotsford

\$1,499,900



Welcome to this stunning 3-storey executive home, featuring 9 spacious bedrooms and 4.5 bathrooms, located in the most desired area of Abbotsford. This property is ideally situated within walking distance to Rotary Stadium and is close to all schools, recreational facilities, and shopping centers. The home includes a fully finished 3-bedroom suite, perfect for guests or extended family. The open-concept family room, kitchen, and breakfast area are designed to flow seamlessly together, creating a fantastic space for large-scale gatherings and entertaining. Storage shed with power and its own separate breaker. RV parking available. This is a rare opportunity to own a beautiful home in a prime location.

KEY INFORMATION

MLS® R2947727

Residential Detached

Abbotsford West

9 Bedrooms

5 Bathrooms

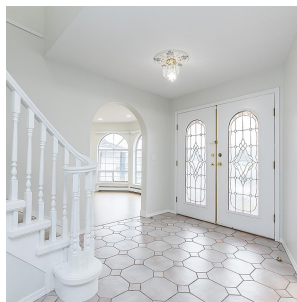
4,147 SF

7,318 SF Lot

FEATURES

Year Built: 1992

Listed By: RE/MAX Truepeak Realty



rennie