

1508 668 Columbia Street, New Westminster

\$499,900



This 1-bedroom unit at Trapp & Holbrook boasts stunning Fraser River and east mountain views! The efficient layout ensures no space is wasted. It features laminate flooring, quartz countertops & S/S appliances. With its bright SE exposure and a large balcony, it's move-in ready. Includes 1 parking stall + locker. The building offers amenities such as a gym, party room, and a communal terrace with green space, a fire pit & BBQ area. Developed by the award-winning Salient Group, it combines heritage charm with modern updates through the restoration of the Trapp Block and Holbrook Block buildings. Situated in a prime location just minutes from the New Westminster SkyTrain station, River Market, restaurants, cafes, boutiques, and shops. OPEN HOUSE: Sun Jan. 12th 2-4PM.

KEY INFORMATION

MLS® R2948393

Residential Attached

Quay

1 Bedroom

1 Bathroom

523 SF

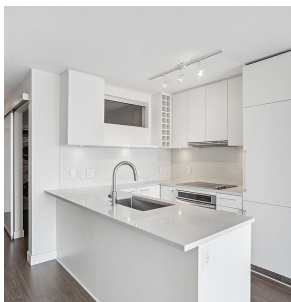
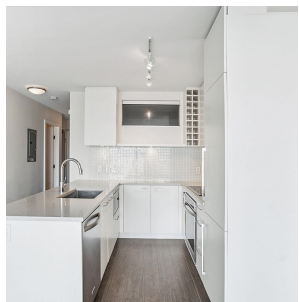
\$321.82 Maintenance Fees

FEATURES

Year Built: 2015

Views: Fraser River

Listed By: eXp Realty



rennie