

# 310 2102 W 48th Avenue, Vancouver

\$2,288,000



Experience the epitome of high-luxury living in this contemporary, low-rise concrete building developed by CRESSEY, nestled in the prestigious Kerrisdale neighborhood, near the finest schools. This exquisite property boasts 2 bedrooms, 2.5 baths, and a versatile den that could effortlessly serve as a third bedroom. The home is further enhanced by a spacious laundry room equipped with a side-by-side washer/dryer. Crafted with meticulous attention to detail, the interior features Italian wood cabinetry that exudes elegance and sophistication. The 9" high ceilings create an airy and open ambiance, while the top-of-the-line Subzero fridge and Wolf appliances, including a stove and 5 gas burner. The property includes two parking spaces and an extra-large locker.

## KEY INFORMATION

MLS® R2948510

Residential Attached

Kerrisdale

2 Bedrooms

3 Bathrooms

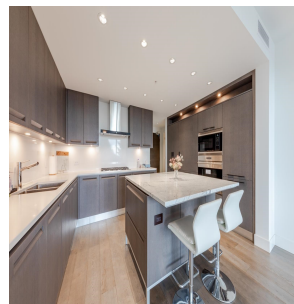
1,405 SF

\$1,036.81 Maintenance Fees

## FEATURES

Year Built: 2018

Listed By: Royal Pacific Realty (Kingsway) Ltd.



rennie