

8250 Lakefield Drive, Burnaby

\$2,580,000



Exceptional 8067 sqft private estate in Burnaby's most desirable BURNABY LAKE neighborhood. This inviting 3 level home offers 5 beds, 5 baths, newly RENOVATED KITCHEN, office, vaulted ceiling media and rec room across 4920 sqft of spacious living perfect for families. Boasting architecturally elegant interiors, principal rooms are ideal for entertaining with gourmet kitchen, formal living and dining rooms providing a wonderful indoor-outdoor lifestyle with walk-out to patio & landscaped backyard. School catchments: Lakeview Elementary, Burnaby Central Secondary (AP program). Nestled on a quiet street across from a greenbelt, this property is along a bike route and just steps from Robert Burnaby Park, Deer Lake Park, Edmonds Community Centre, Highgate Village, transit & quick access to HWY1

KEY INFORMATION

MLS® R2948862

Residential Detached

Burnaby Lake

5 Bedrooms

5 Bathrooms

4,920 SF

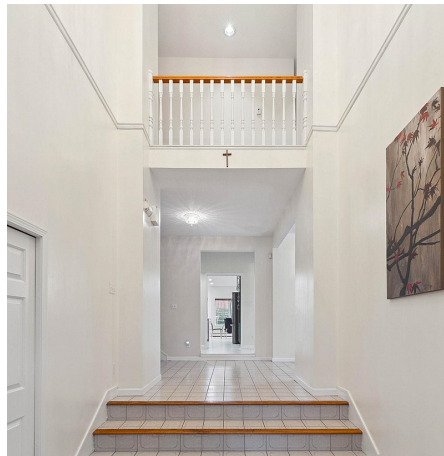
8,067 SF Lot

FEATURES

Year Built: 1989

Views: Greenbelt

Listed By: Promerita Realty Corp.



rennie