

# 2035 Spruce Drive, Squamish

\$1,249,900



Dreaming of living between the city buzz and epic ski slopes? This Squamish gem has it all. Sitting on a 10,200 sq ft lot backing onto green space and the river, this cozy two-level home offers 3 bedrooms, 2 baths, plus a guest suite. The upstairs boasts a wood-burning fireplace, stainless steel kitchen appliances, and a covered deck with jaw-dropping mountain views. The primary bedroom has been opened up for extra space but can easily go back to 2 rooms if needed. Outside, the park-like yard is fully fenced with tons of storage, a bonus workshop, and space to roam. Just a short stroll to the river or hit the nearby dyke trails for scenic walks. Whether you're chasing powder at Whistler or soaking in Vancouver's energy, this spot nails the best of both worlds. Bring your vision and lets go

## KEY INFORMATION

MLS® R2949007

Residential Detached

Valleycliffe

3 Bedrooms

2 Bathrooms

2,105 SF

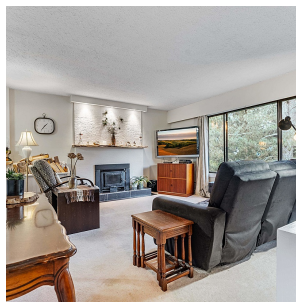
10,150 SF Lot

## FEATURES

Year Built: 1977

Views: Squamish Chief

Listed By: Pathway Executives Realty Inc (Yale Rd)



rennie