

401 3421 Curle Avenue, Burnaby

\$898,000



Don't miss this RARE FIND! A top-floor, corner unit in Cascade Village, this executive-style condo offers incredible light and space. With vaulted ceilings, skylights, and windows facing N, E, & West, it's always bright and airy. Step out onto your private, west-facing patio to enjoy lovely garden views. Inside, updated flooring features laminate hardwood and ceramic tiles, with refreshed bathrooms for a modern touch. You'll also enjoy two side-by-side parking spots with a storage room right behind. Fantastic amenities include indoor lap pool, hot tub, sauna, guest suites and a spacious party room with a bar.

KEY INFORMATION

MLS® R2949187

Residential Attached

Burnaby Hospital

2 Bedrooms

2 Bathrooms

1,356 SF

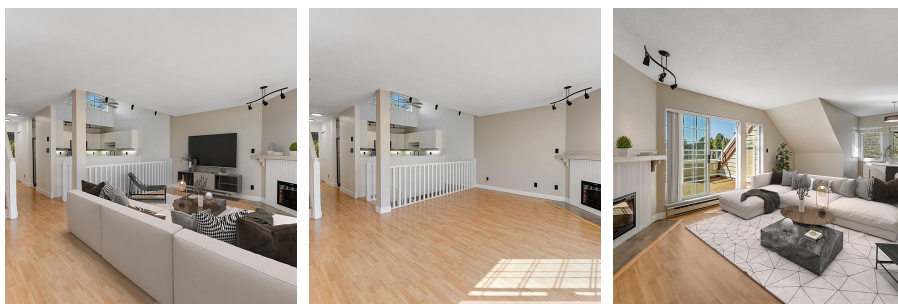
\$627.07 Maintenance Fees

FEATURES

Year Built: 1986

Views: West overlooking gardens

Listed By: One Percent Realty Ltd.



rennie