

# 3431 Victoria Drive, Coquitlam

\$1,998,000



Beautifully built Burke Mountain family home with spectacular upgrades! This 7 Bedroom 6 Bath home combines open concept living with luxury and style. Main floor offers an open living space, kitchen, an upgraded waterfall island with an integrated wine fridge, spice kitchen & a bedroom with ton of natural light. The doors to the family room lead out to a turfed custom outdoor backyard that includes a built in kitchen with a fridge, BBQ, pizza oven & a hot tub. Upstairs has 4 Bedrooms with mountain & city view. The downstairs has a 2 bedroom legal suite & a second nanny suite mortgage helper with its own entrance generating \$2830 a month. Radiant heating throughout the house including the basement. A/C. Central Vac. Security & Camera System. EV charging & more. Call Today!

## KEY INFORMATION

MLS® R2949202

Residential Detached

Burke Mountain

7 Bedrooms

6 Bathrooms

3,501 SF

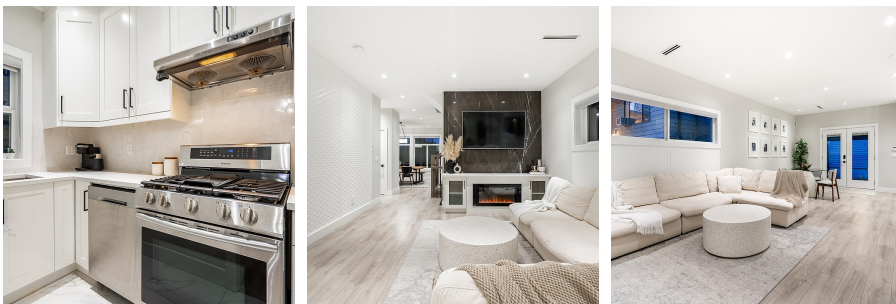
3,672 SF Lot

## FEATURES

Year Built: 2020

Views: Mountains

Listed By: Sutton Group-West Coast Realty



rennie