

2 Ravine Drive, Port Moody

\$1,799,000



Heritage Mountain home on Greenbelt! Lovely 3 level, 5 bedroom 3 1/2 Bath 3500 sq. ft. home with walkout basement and separate entrance. Private, flat 8,498 sq. ft. lot. Excellent floor plan with large kitchen, adjoining family room, and private covered sundeck to enjoy nature with your morning cup of coffee. Separate living/dining room combo with fireplace and lots of windows. Upstairs has 3 family sized bedrooms, and the Primary bedroom has a deluxe ensuite bathroom with separate shower and soaker tub. Downstairs is fully finished with another two bedrooms. Walk right out to the Gazebo and flat Greenbelt yard. Updated roof, furnace and on demand hot water. Great location, 'not too far' up the hill and close to all 3 levels of school. Come and take a look.

KEY INFORMATION

MLS® R2949329

Residential Detached

Heritage Mountain

6 Bedrooms

4 Bathrooms

3,718 SF

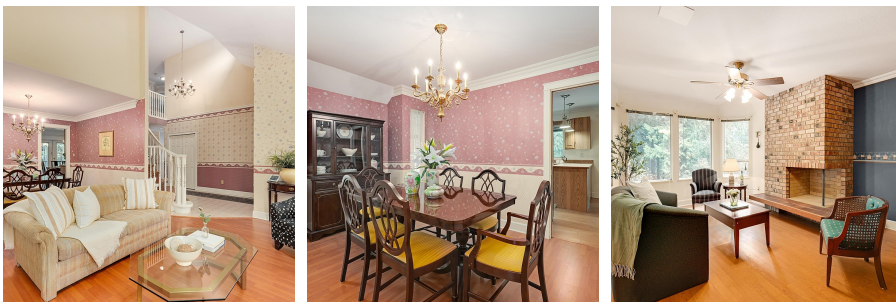
8,498 SF Lot

FEATURES

Year Built: 1986

Views: Greenbelt

Listed By: RE/MAX Sabre Realty Group



rennie