

1392 El Camino Drive, Coquitlam

\$1,650,000



MOVE-IN READY family home with great potential! 2 levels, 3 beds up, 2.5 baths & office on main. LARGE fenced backyard with garden. Attached double garage, RV parking & room for 6+ cars! Side driveway leads to a BONUS 472sf detached garage/workshop with 60 amp service, insulated with sound deadening insulation & double drywall. Potential for Secondary Dwelling Unit (subject to Zoning) or keep as workshop, garage for "Toys" etc. School Catchment - Nestor (K-5), Maple Creek (6-8), Pinetree (9-12). Close to Coquitlam River & Trails, Hockaday Park, Town Centre Park, Lafarge Lake, Coquitlam Crunch Trail & Westwood Plateau Golf Club, Coquitlam Centre Mall & Henderson Place. Bus stop 10mins walk or 20mins walk to Lafarge SkyTrain. See Virtual Tour Video.

KEY INFORMATION

MLS® R2949414

Residential Detached

Hockaday

3 Bedrooms

3 Bathrooms

2,138 SF

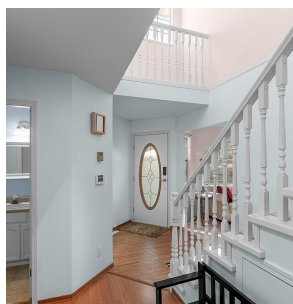
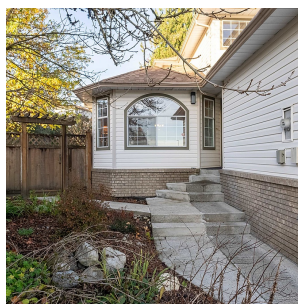
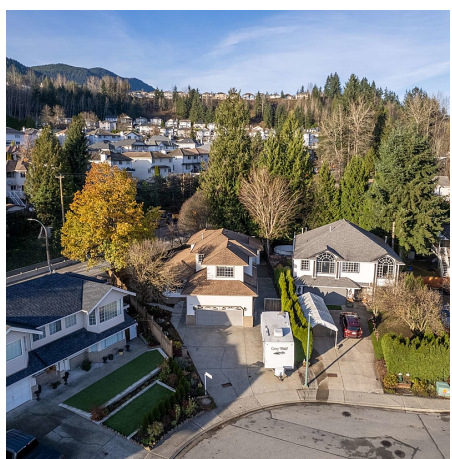
7,616 SF Lot

FEATURES

Year Built: 1992

Views: CITY & MOUNTAIN VIEWS

Listed By: Team 3000 Realty Ltd.



rennie