

706 9623 Manchester Drive, Burnaby

\$667,000



An incredible opportunity to own this well-maintained 2 bedroom, 2 bath corner unit in Strathmore Towers in the core of popular Loughheed Town Centre! This unit offers a panoramic view of a beautifully landscaped green space. South-western facing gives plenty of natural light, spacious living and a charming breakfast nook that overlooks the garden, allowing in the morning sunshine. Qualified Upgrades, kitchen cabinets, backsplash, quartz countertop, and ceramic floors. The primary bedroom is spacious and features a large mirrored closet. Rentals Allowed! Quite Community, walking distance to Loughheed Skytrain Station, Loughheed Mall, and H-mart. 5 minute drive to SFU and many restaurants nearby. Quick access to HWY 1.

KEY INFORMATION

MLS® R2949476

Residential Attached

Cariboo

2 Bedrooms

2 Bathrooms

974 SF

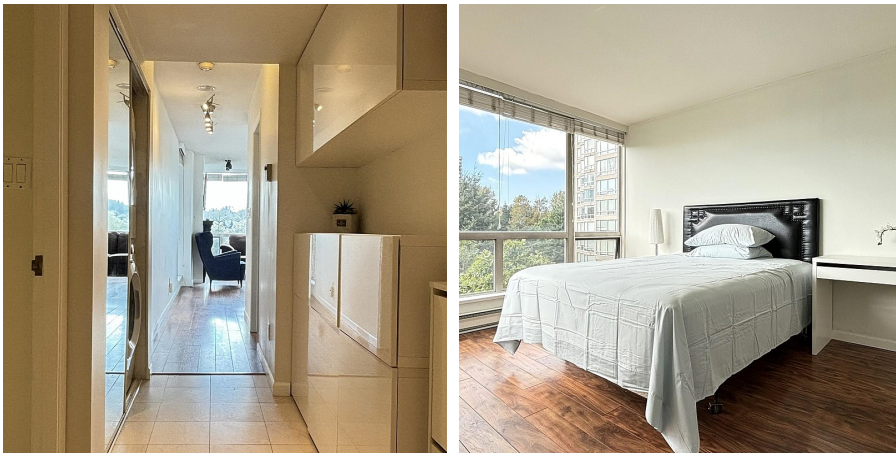
\$416.29 Maintenance Fees

FEATURES

Year Built: 1994

Views: South

Listed By: Sutton Group Seafair Realty



rennie