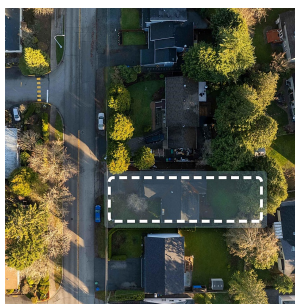
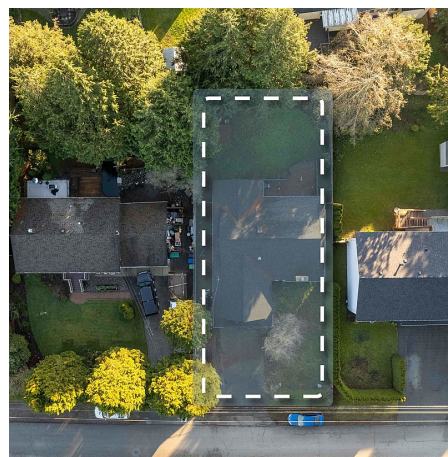
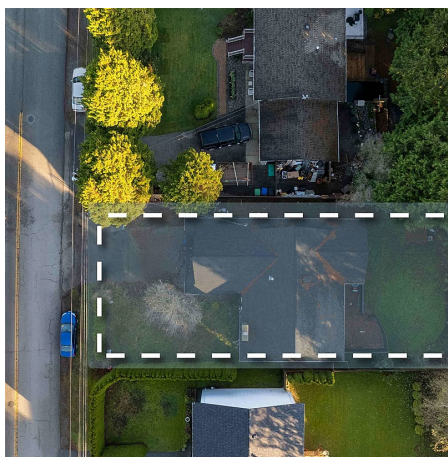
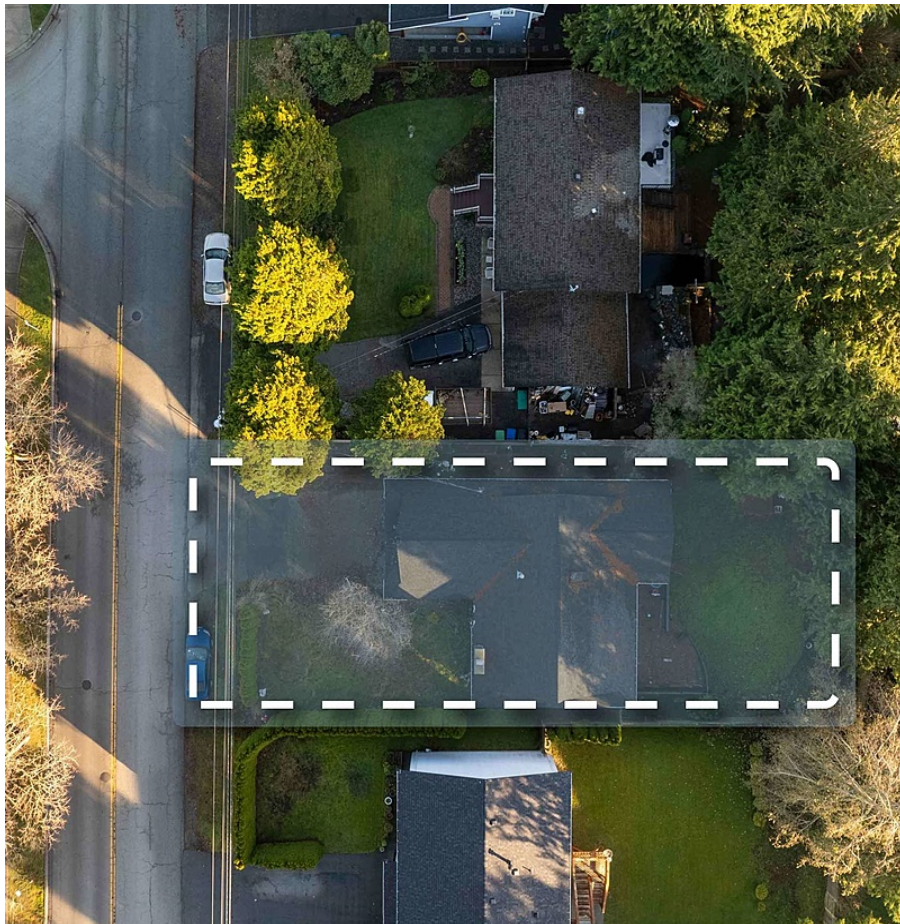


15930 20 Avenue, Surrey

\$1,402,500



Unique opportunity in South Surrey's Sunnyside. This 7,072 sqft R-3 zoned lot offers exceptional building potential in a highly sought-after neighbourhood. Ideally located less than 500m from bus stops, it provides quick access to Hwy 99 & King George Blvd. Surrounded by top-rated schools including South Meridian, Jessie Lee & Peace Arch Elementary, Earl Marriott Secondary & close to premier parks like Alderwood & Bakerview, this property is perfect for families. Enjoy nearby recreation at Grandview Aquatic Centre, South Surrey Recreation and Arts Centre with convenient shopping at Semiahmoo Mall, Walmart, Superstore, Morgan Crossing & the vibrant shops & restaurants along White Rock Beach. Don't miss this rare chance to create your dream home or investment project in this prime location!

KEY INFORMATION

MLS® R2949506

Residential Detached

King George Corridor

3 Bedrooms

2 Bathrooms

1,330 SF

7,072 SF Lot

FEATURES

Year Built: 1983

Listed By: eXp Realty of Canada Inc.

rennie