

# 751 Catalina Crescent, Richmond

\$1,350,000



Welcome to 751 Catalina Crescent, a 50'x110' corner lot in Burkeville, Richmond's hidden gem on Sea Island. This family-friendly neighbourhood features quiet streets, crescent layouts, and a vibrant community. Facing a playground and steps from the Sea Island Community Centre, the active Sea Island Community Association offers programs like arts, yoga, and pickleball, plus cherished events like Burkeville Days and Breakfast with Santa. Zoned RS1/E, the property is ideal for building your dream home or enjoying as is. With a 7-minute walk to Creative Childcare Centre and minutes from Vancouver International Airport, this location provides big-city convenience with a small-town feel.

## KEY INFORMATION

MLS® R2949554

Residential Detached

Sea Island

3 Bedrooms

2 Bathrooms

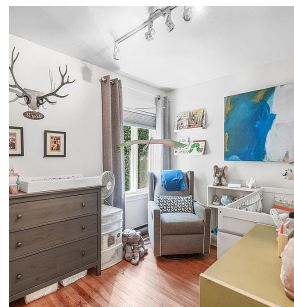
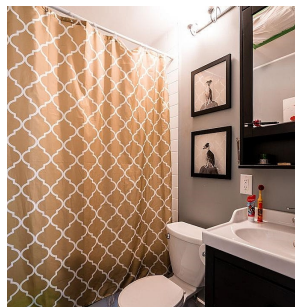
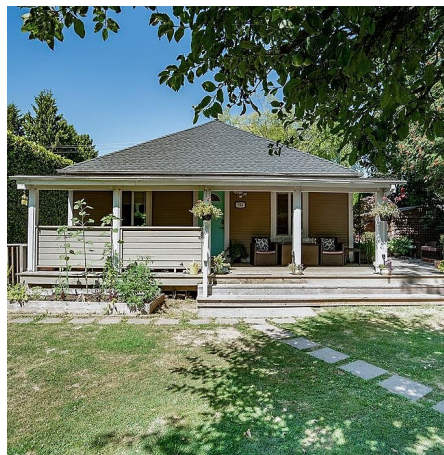
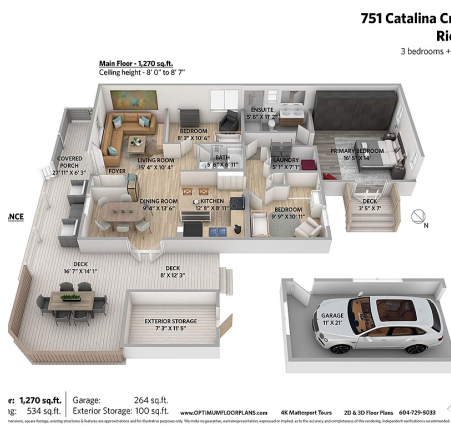
1,270 SF

5,498 SF Lot

## FEATURES

Year Built: 1944

Listed By: RE/MAX Crest Realty



rennie