

# 13827 Berg Road, Surrey

\$1,799,000



"Prime Development Opportunity in North Surrey" Perfect for investors and developers. Development site in the Surrey Center Plan, designated for Low-Rise Residential Type II. The Gateway Skytrain Station is about 10- minute walking distance. 6 Bedrooms 3 Washrooms including 3 Bedrooms Basement Suite. Whole house is RENTED. Near by a new large scale condominium complex is being developed and marketed. A mixed use site in this booming neighborhood will be a winner. Property contains accommodation which is not authorized. Contact the L.A. for more information.

## KEY INFORMATION

MLS® R2949504

Residential Detached

Bolivar Heights

6 Bedrooms

3 Bathrooms

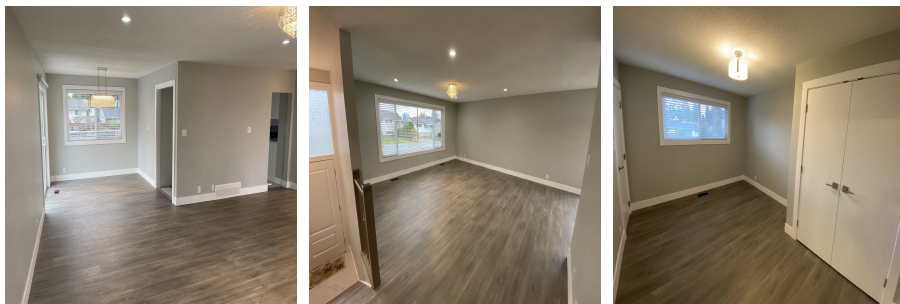
2,512 SF

9,496 SF Lot

## FEATURES

Year Built: 1965

Listed By: RE/MAX Performance Realty



rennie