

14020 Reichenbach Road, Pitt Meadows

\$3,888,000



Experience modern living in this renovated farm property. Upgrades include a 200-amp electrical system, updated plumbing, and an energy-efficient heat pump for year-round comfort. An approved sunroom plan adds future potential. Newly paved driveways and an advanced irrigation system support thriving blueberry fields. The farm also features apple and cherry trees, including 100 cherry trees, offering seasonal beauty and harvests. Earn over \$50,000 annually from a licensed boarding service, plus \$30,000 from a U-pick blueberry operation requiring minimal effort. Near Pitt Meadows Marina, shops, transit, and top-rated schools, this serene property balances country living with city convenience. Don't miss this rare chance for a peaceful lifestyle and profitable business—make it yours today!

KEY INFORMATION

MLS® R2950254

Residential Detached

North Meadows

8 Bedrooms

4 Bathrooms

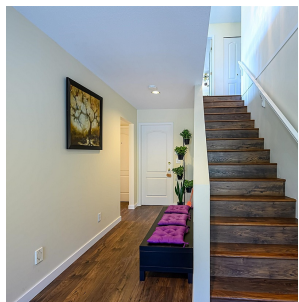
3,428 SF

FEATURES

Year Built: 1996

Views: Mountain

Listed By: RE/MAX City Realty



rennie