

Ph610 1540 W 2nd Avenue, Vancouver

\$2,650,000



Designer-renovated penthouse in Arthur Erickson's Waterfall Building, offering 1,962 sq.ft. over two levels. The double-wide loft has double-height windows, a 31-ft. living room with courtyard waterfall views, powder room, 9-ft. storage wall, and floating media unit. Motorized blinds and custom drapery add privacy. The kitchen by Stephanie Brown features quartz counters, marble backsplash, and high-end appliances: Sub-Zero fridge, wine fridge, espresso bar, Miele dishwasher, Gaggenau cooktop and oven, and microwave drawer. Primary ensuite has double vanity, illuminated mirrors, shower, infinity tub, and Duravit toilet. Upstairs are two bedrooms, a walk-in closet, two flex spaces, and access to a 1,120 sq.ft. rooftop patio with panoramic views. Includes two parking spaces and two lockers.

KEY INFORMATION

MLS® R2950615

Residential Attached

False Creek

2 Bedrooms

3 Bathrooms

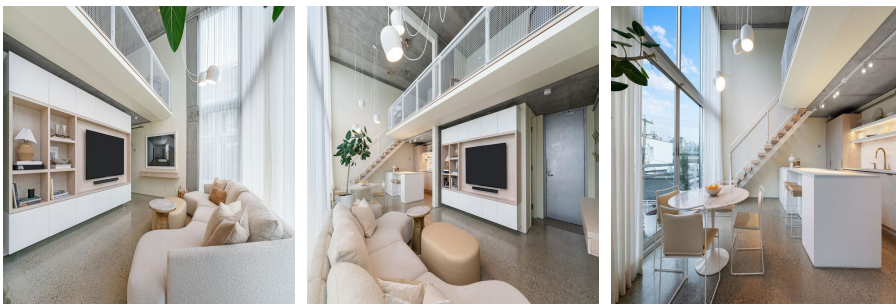
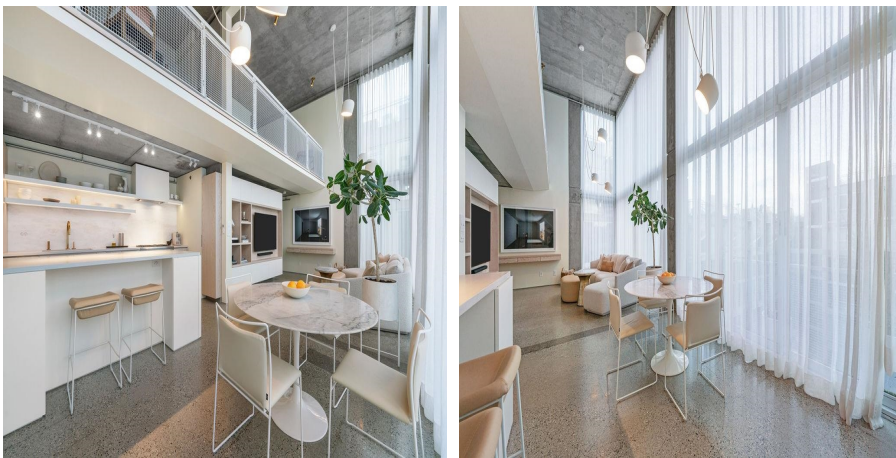
1,955 SF

\$1,264.00 Maintenance Fees

FEATURES

Year Built: 2001

Listed By: Framework Marketing Inc.



rennie