

# 3950 Cherrilee Cres, Saanich

\$1,300,000



Introducing an incredible opportunity in one of Greater Victoria's most sought after communities, Cadboro Bay! Steps to the world renowned Gyro Park Oceanfront beach and playgrounds, we are pleased to offer this clean canvas for you to get as creative as you wish. With the flexible RS10 Zoning and meeting the Small Scale Multi-Unit Housing (SSMUH) regulations, create your vision and start building with no rezoning necessary. Situated on over 10,000 sq/ft with Southwest exposure & some peek a boo Ocean Views the higher you go. Whether you've been looking for that dream lot to build your forever home or DEVELOPERS looking to add density, this is definitely a must see! An unbeatable location just minutes to UVIC, Cadboro Bay Village, various Beach fronts, hiking trails & Frank Hobbs Elementary. (id:56120)

## KEY INFORMATION

MLS® 981322

Residential Detached

Cadboro Bay

3 Bedrooms

2 Bathrooms

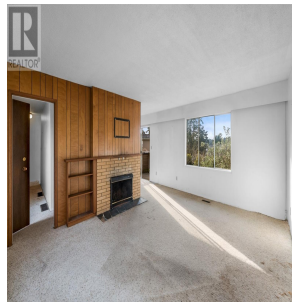
3,051 SF

10,336 SF Lot

## FEATURES

Year Built: 1971

Listed By: Pemberton Holmes Ltd.



rennie