

1307 Eagle Drive, Pemberton

\$1,999,000



Welcome to 1307 Eagle Drive, set on a sunny bluff in the Pemberton Benchlands with sweeping views of the valley's lush pastures and mountains. This energy-efficient home features ICF walls to the roof, radiant heating, and solar power provisions. The main level offers single-floor living with 3br/2.5ba, open kitchen, dining, and living areas. The rooftop patio is ready for gardens, BBQs, and hot-tubbing. Below, a 825 sq. ft. 1br/2ba suite with a private entrance and deck space. A 1br/1ba suite in the flex-room is being legitimized for a triplex conversion through Bill 44. With parklands to the east, walking, hiking, and biking trails to the south, and just a 10-minute walk to the village for shopping and dining, this home welcomes you to a vibrant, nature-filled lifestyle.

KEY INFORMATION

MLS® R2951139

Residential Detached

Pemberton

5 Bedrooms

7 Bathrooms

3,573 SF

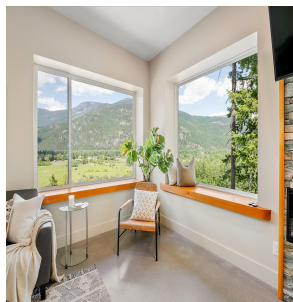
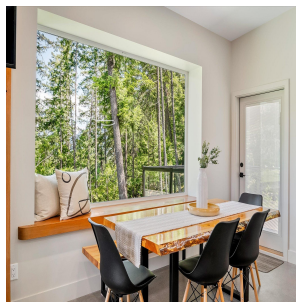
8,019 SF Lot

FEATURES

Year Built: 2022

Views: Pemberton Valley and Mountains

Listed By: Engel & Volkers Whistler



rennie