

# 327 4368 Main Street, Whistler

\$819,000



Make these bright and freshly painted studio units with mountain views at Market Pavilion- Village central -your rental investment or home away from home! Start with part-time or full-time rental to generate revenue. Market Pavilion is centrally located in Whistler Village providing easy access to restaurants, shopping and grocery/liquor stores. Beaded up the mountain? Ski Lifts are a short walk away or the free Marketplace shuttle stops practically at the front door! Building amenities include a roof top hot tub, on-site laundry, underground parking, and communal bike storage. Properties are each listed separately at #327: \$819,000 #328..\$799,000

## KEY INFORMATION

MLS® R2951153

Residential Attached

Whistler Village

0 Bedrooms

1 Bathroom

460 SF

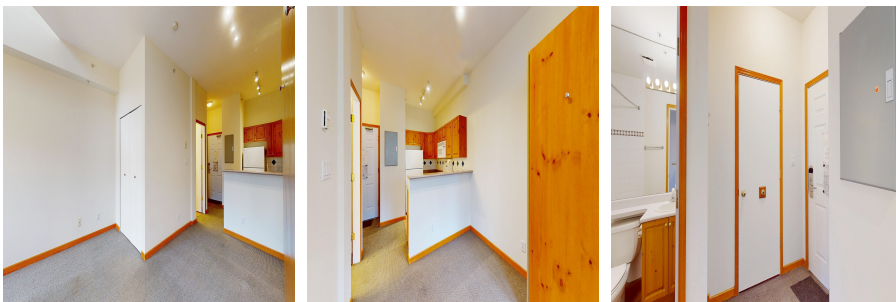
\$625.13 Maintenance Fees

## FEATURES

Year Built: 1995

Views: Mountain

Listed By: Whistler Real Estate Company Limited



rennie