

9366 Wedgemount Plateau Drive, Whistler

\$5,999,000



Nestled amidst the breathtaking landscapes of Whistler, BC, this extraordinary acreage is nearly 60 acres in size and offers a rare opportunity to create something truly remarkable. Surrounded by towering evergreens, pristine alpine air, and the rugged beauty of British Columbia, this isn't just land—it's your legacy in the making. Whether you envision an exclusive mountain retreat, a sustainable homesite project, or a private sanctuary to reconnect with nature, this land holds the promise of turning aspirations into reality. Located in the WedgeWoods development this parcel offers proximity to world-class skiing on Whistler Blackcomb and the vibrant village life. This property combines seclusion with the convenience, panoramic views and access to unparalleled outdoor adventures.

KEY INFORMATION

MLS® R2951171

Land Only

Wedge Woods

0 Bedrooms

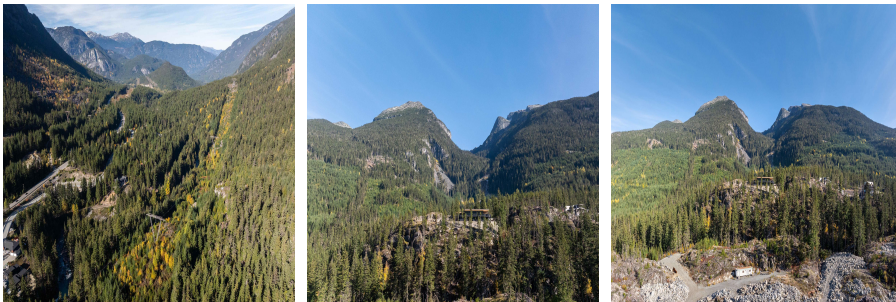
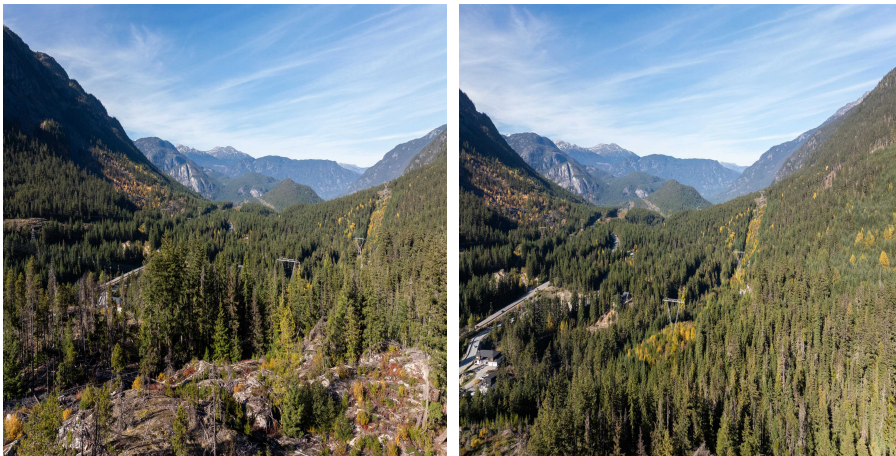
0 Bathrooms

0 SF

FEATURES

Views: Wedge Mountain

Listed By: Angell Hasman & Associates Realty Ltd.



rennie