

17695 97 Avenue, Surrey

\$2,200,000



Great Holding property! This RARE opportunity is located within the Anniedale-Tynehead NCP of Surrey, designated for IL (Light Industrial). The over-sized 12,720 SqFt FLAT LOT with 82' frontage by 155' depth, strategically positioned at the intersection of HWY 15 and HWY 1. The property is surrounded by temporary use applications of outdoor storage and truck parking, as well as active development applications for light industrial use. It also includes a mechanic's shop, built with the City's permit, providing extra income potential while planning for re-development. The house is sold as-is, the value mainly in the land. Easy access to the Port Mann Bridge, Golden Ears Bridge, and major highway. Perfectly located for opportunities in a rapidly growing industrial corridor.

KEY INFORMATION

MLS® R2951761

Residential Detached

Port Kells

2 Bedrooms

1 Bathroom

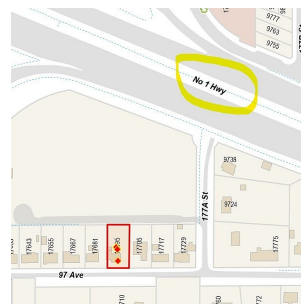
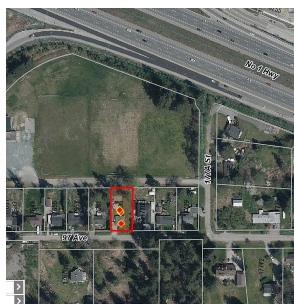
927 SF

12,720 SF Lot

FEATURES

Year Built: 1957

Listed By: Sutton Group - 1st West Realty



rennie