

556 Bayview Drive, Mayne Island

\$669,000



Open plan living with fabulous Ocean views over Georgia Strait. This classic 1980 home takes full advantage of the ocean views with large windows, high ceilings, and a propane fireplace. With 841 sq.ft. 2 bdrm 1 bthrm upstairs and an open plan living dining/kitchen. Large wrap around decking for year round, outside enjoyment. Another 840 sqft unfinished basement with separate entrances provide unlimited possibilities for a guest suite, office or fabulous studio space. An enclosed 2 car garage adds plenty of workshop and parking options. Low maintenance and easy care landscaping, this bright sunny lots in a great neighbourhood. Easy walking and close to some of the nicest bays, beaches, and a short walk to the iconic Mayne Island Lighthouse Park.

KEY INFORMATION

MLS® R2952320

Residential Detached

Gulf Islands Other

2 Bedrooms

0 Bathrooms

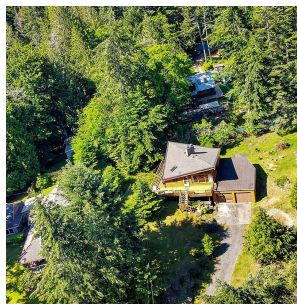
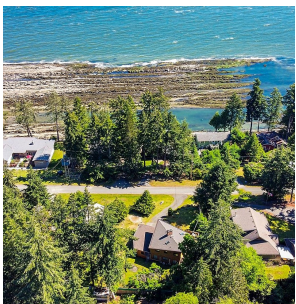
1,652 SF

FEATURES

Year Built: 1980

Views: Ocean View

Listed By: Gulfport Realty



rennie